

**ICG** **INDOFINE Chemical Company, Inc.**

121 Stryker Lane, Bldg. 30, Suite 1 • Hillsborough, NJ 08844 • U.S.A.

Phone: (908) 359-6778 • FAX: (908) 359-1179

website: [www.indofinechemical.com](http://www.indofinechemical.com)

e-mail: [chemical@indofinechemical.com](mailto:chemical@indofinechemical.com)

**CERTIFICATE OF ANALYSIS**

Catalog Number: 06-1198

Product Name: **SINAPINE THIOCYANATE**

CAS Number: [7431-77-8]

Lot Number: 1603742

Chemical Formula: C<sub>17</sub>H<sub>24</sub>N<sub>2</sub>O<sub>5</sub>S

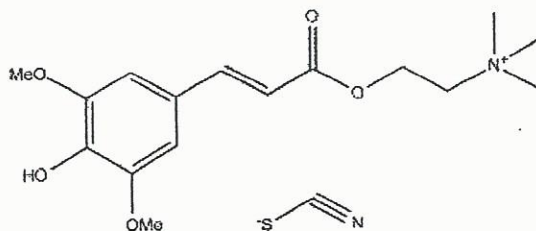
Molecular Weight: 368.45

Appearance: Off-white powder

Loss on Drying: 1.1%

Storage: Store at 2-8°C. Protect from light.

Purity(HPLC): 99.13%





# INDOFINE Chemical Company, Inc.

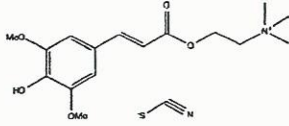
121 Stryker Lane, Bldg. 30, Suite 1 • Hillsborough, NJ 08844 • U.S.A.

Phone: (908) 359-6778 • FAX: (908) 359-1179

website: [www.indofinechemical.com](http://www.indofinechemical.com)

e-mail: [chemical@indofinechemical.com](mailto:chemical@indofinechemical.com)

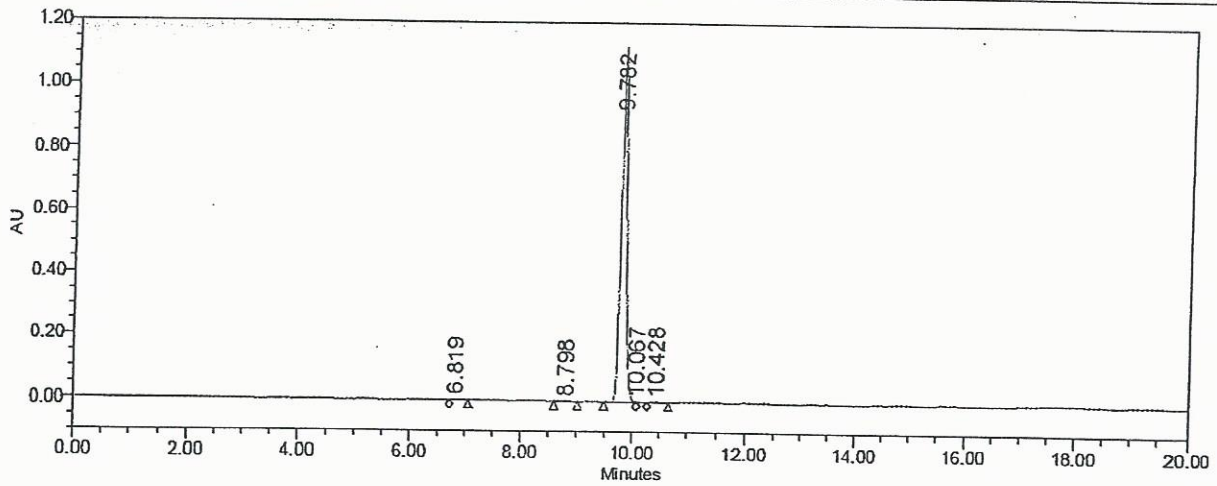
## HPLC ANALYSIS



Catalog No.: 06-1198  
 Product Name: Sinapine thiocyanate  
 Lot No.: 1603742

### SAMPLE INFORMATION

Sample Name:	Sinapine thiocyanate	Sample Set Name:	
Sample Type:	Unknown	Acq. Method Set:	Sinapine thiocyanate
Vial:	2	Processing Method:	Samples
Injection #:	1	Channel Name:	330.0nm
Injection Volume:	10.00 ul	Proc. Chnl. Descr.:	PDA 330.0 nm
Run Time:	20.0 Minutes		



	RT	Area	% Area	USP Plate Count	USP Resolution
1	6.819	17490	0.23	31402.10	
2	8.798	13896	0.18	10262.89	7.40
3	9.782	7559108	99.13	50001.80	3.49
4	10.067	16479	0.22		1.57
5	10.428	18454	0.24		